

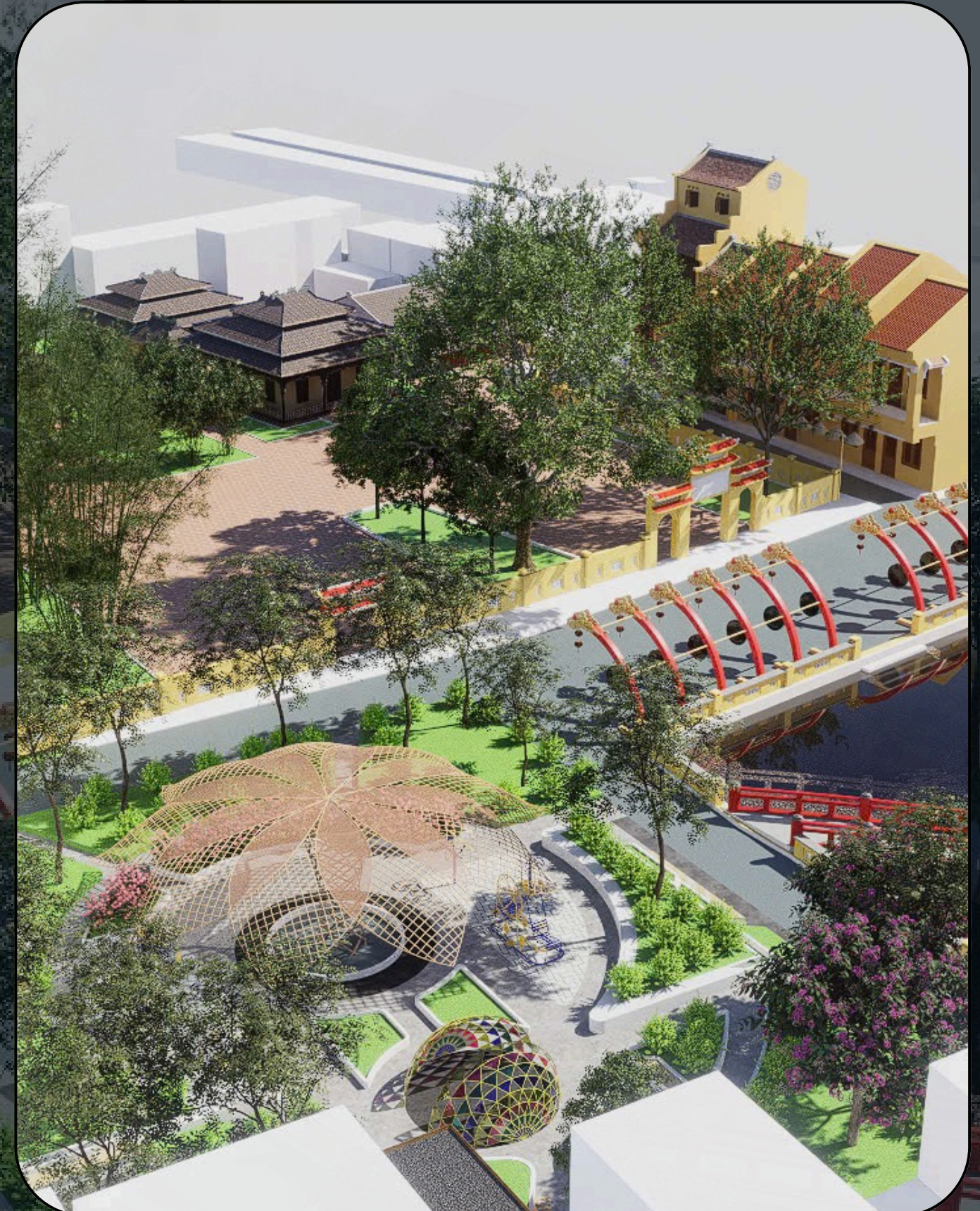


DUT DANANG



# ANALYSIS WORK SHOP BACH KHOA UNIVERSITY AND MAEBASHI UNIVERSITY

GROUP 3





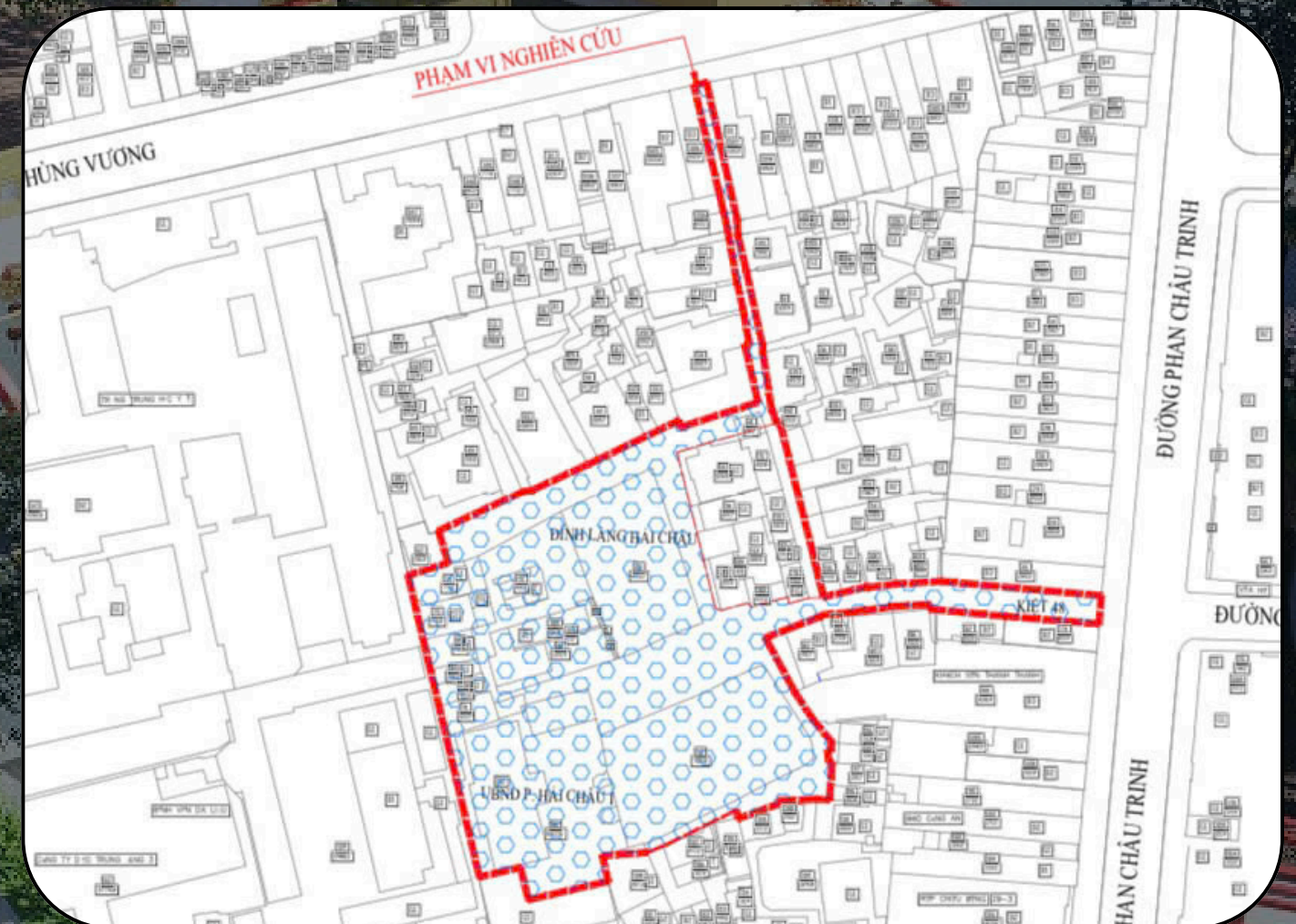
# INTRODUCTION

## Location and Request

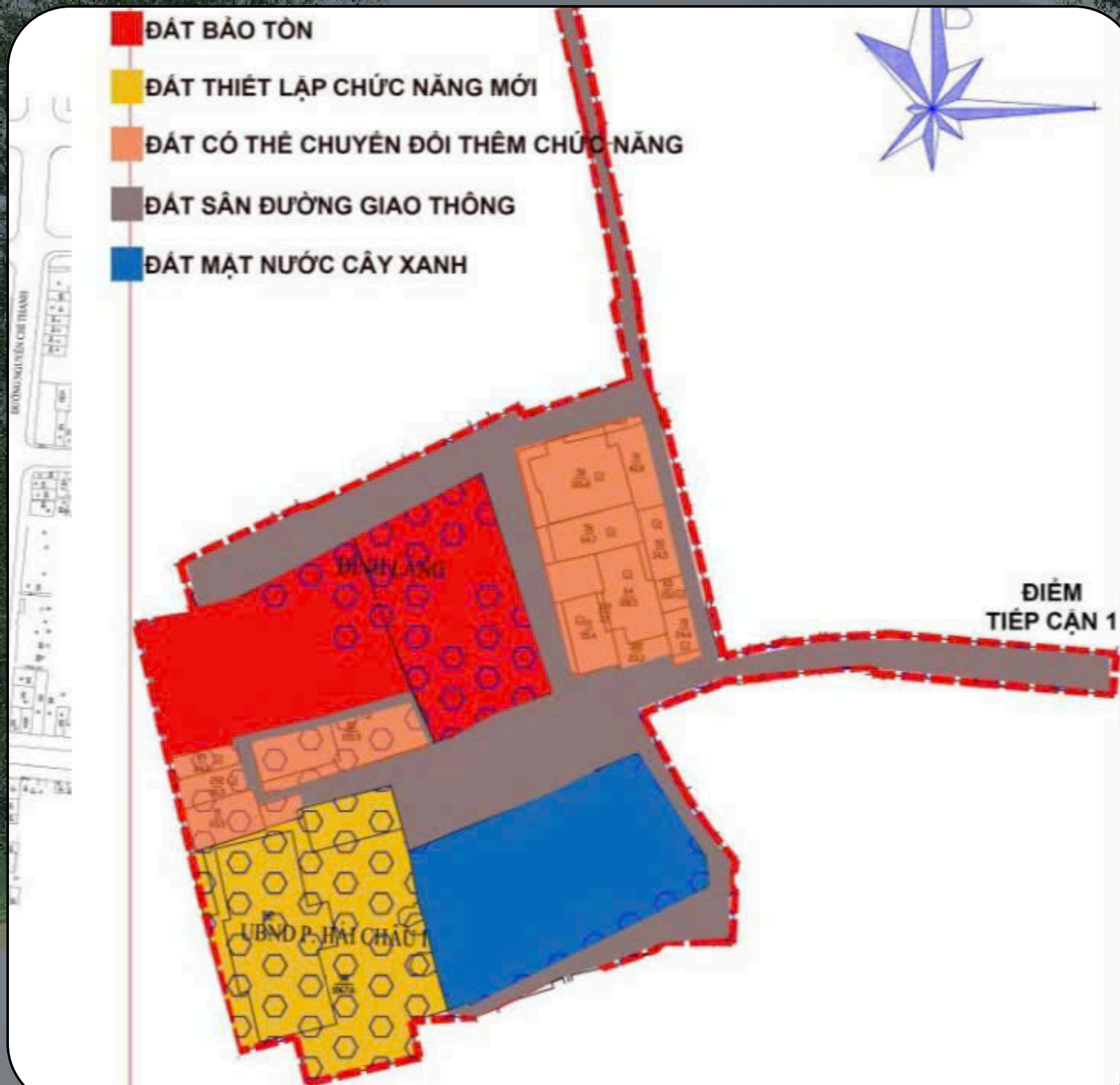
- This landscape is located in Hai Chau village, Danang city, Vietnam
- this area is recognized as an area with sacred architecture, that is the Hai Chau Vietnamese church, So the request from the relevant unit need to make this scenery turning into a public park and open area that all people can access and do activity here

Location of landscape

Request from owner







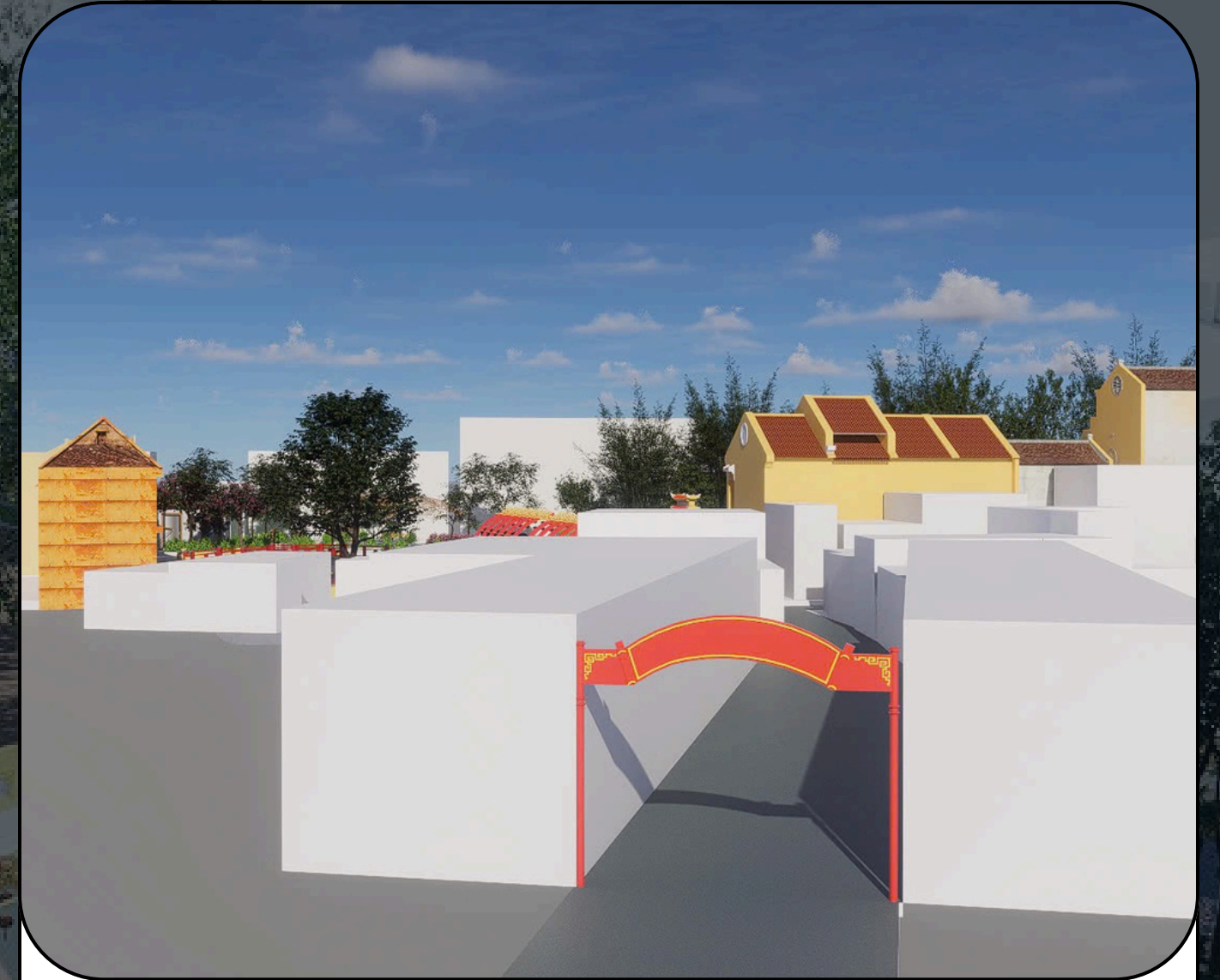
We have divided the area into five parts including Red, Yellow, Orange, Blue and Brown area

- **Red area:** This is an area that we will preserve
- **Yellow area:** The area we will build is an open area or public area
- **Orange area:** This is the area that we will transform into a retail space and a cafe
- **Blue area:** It is an area of ponds water and big trees
- **Brown:** It is a route used for daily transportation.



# THE MAIN GATE

We designed the main gate to be attractive to attract more tourists, and the design was inspired by the ancient architecture of Vietnam.



THE MAIN GATE

**Building Information Modeling**





# HAI CHAU VIETNAMESE CHURCH

In this **Red area** we have made some minor adjustments by adding one main entrance and one secondary entrance, we have increased the area to be more spacious for people's activities in that area, we have also added bamboo trees which are unique to Vietnam to make the surrounding area cooler.





**VIETNAMESE LAMP**



# SHOP AND CAFE

In this **orange area**, we have added the building such as commercial building, restaurants, souvenir shops, handicraft shops and cafes so that people in the area can relax and eat while enjoying the surrounding scenery.



# JAPANESE BRIDGE

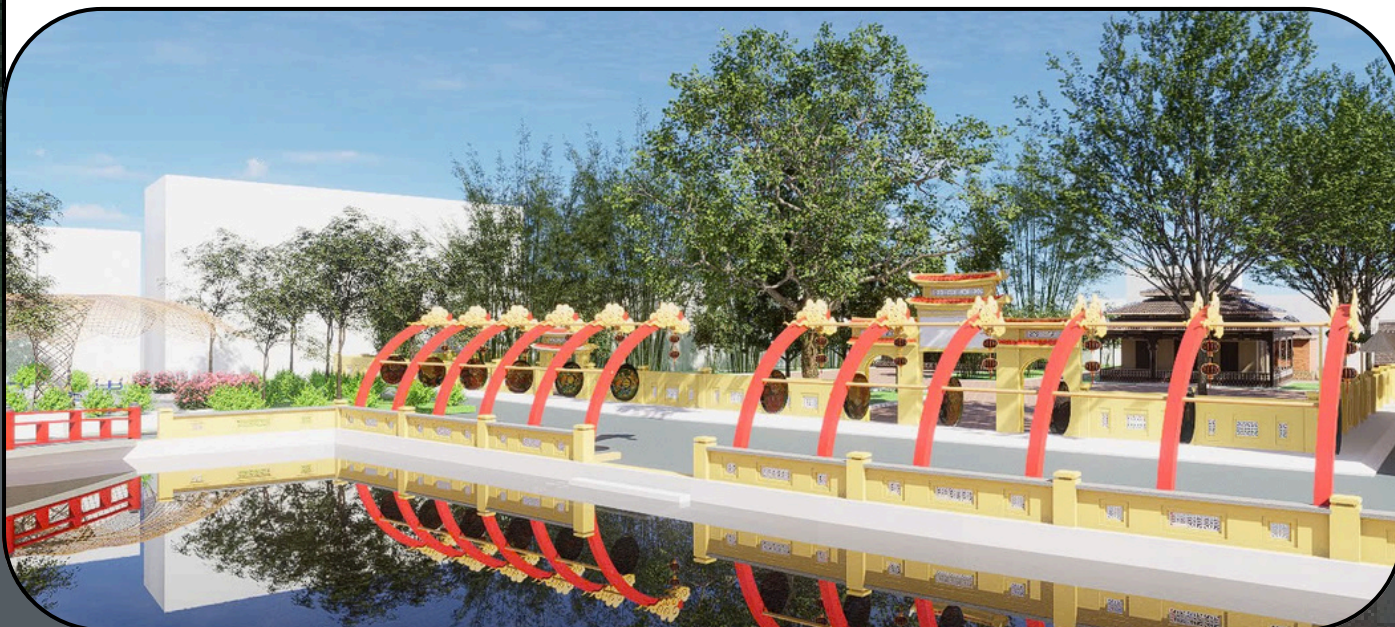
In the [blue area](#) is an area with a large pond. We designed a bridge that is unique to Japan to cross the river to the park, and it is also a photo spot for tourists.







## VIETNAMESE LAMP



# VIETNAMESE LAMP

Around the pond we decorated with Vietnamese lanterns to provide light at night. These lanterns are designed from Vietnamese lanterns inspired by the Mid-Autumn Festival. They also have the ability to play festival music.

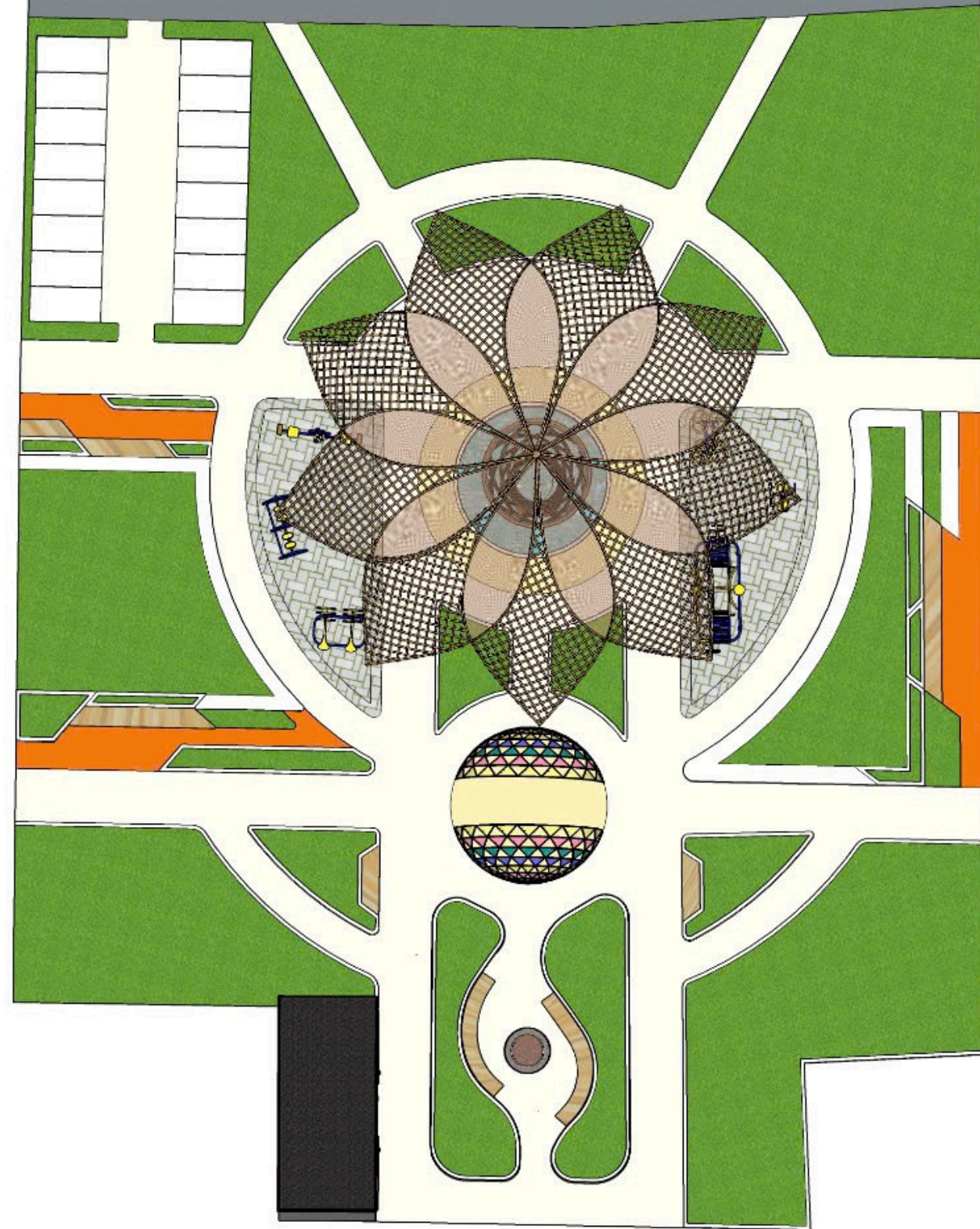


# PUBLIC PARK

In this **yellow area**, we have designed quite a lot of function systems, such as the central point which will be a sunshade roof made of bamboo materials, a public exercise area, a sitting area, a viewpoint, a playground, a parking and more importantly, we have also provided public toilets inside.













An aerial photograph of a university campus. In the upper left, there are traditional Chinese buildings with dark tiled roofs. To the right, a yellow building with a red-tiled roof stands near a bridge with red arches. In the foreground, a large, modern, dome-shaped structure with a grid-like pattern is visible. The campus is surrounded by lush green trees and a body of water in the bottom right corner.

# THANK YOU.

analysis work shop bach khoa university and maebashi university